



FRIENDS NEWSLETTER: ELLISVILLE MARSH RESTORATION PROJECT MARCH 1ST, 2010

This newsletter is produced on a periodic basis to keep members of the Friends of Ellisville Marsh, Inc., apprised of developments and opportunities to become involved.

Citizen Action: Zeroing in on Two MA DEP Permits

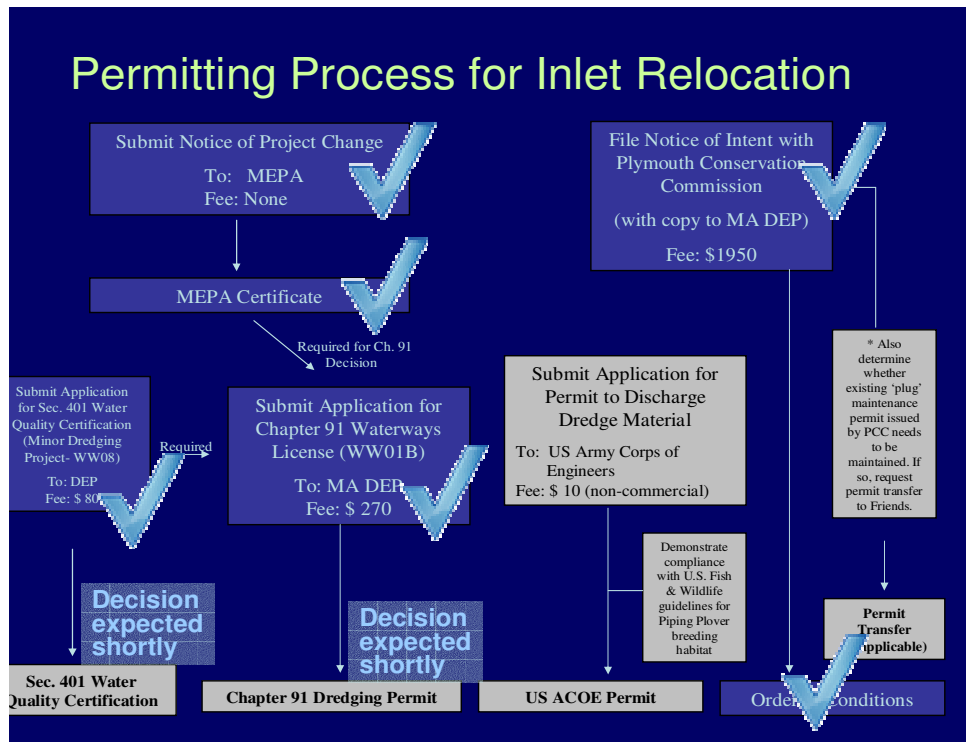
Just before the release of this latest newsletter, we completed what we believe is our final submission to the Massachusetts Department of Environmental Protection (DEP) in support of our applications for a Chapter 91 Waterways License and a Section 401 Water Quality Certification. This is the latest step in our eight-month long pursuit of these permits. Both are required for us to legally relocate the inlet to its pre-1991 position just south of the state park rock jetty. Reopening the inlet will restore healthier tidal flows. In this latest information filing, we provided detailed narratives for nine environmental monitoring programs that will be ongoing throughout the term of the channel maintenance permits, currently assumed to be five years. This represents an extraordinary commitment for any permit applicant, especially

a small nonprofit whose only reward is the satisfaction of knowing that we intervened to help a very special place regain its former vitality.

What remains to be done?

The Friends will soon submit an application to the U.S. Army Corps of Engineers for the final permit required.

This summer and fall we will collect our next round of



baseline environmental monitoring data so we can prove scientifically in future years that the practice of maintaining the inlet channel enhances the health of the marsh system.

To Contact the Board or Share Your Ideas:

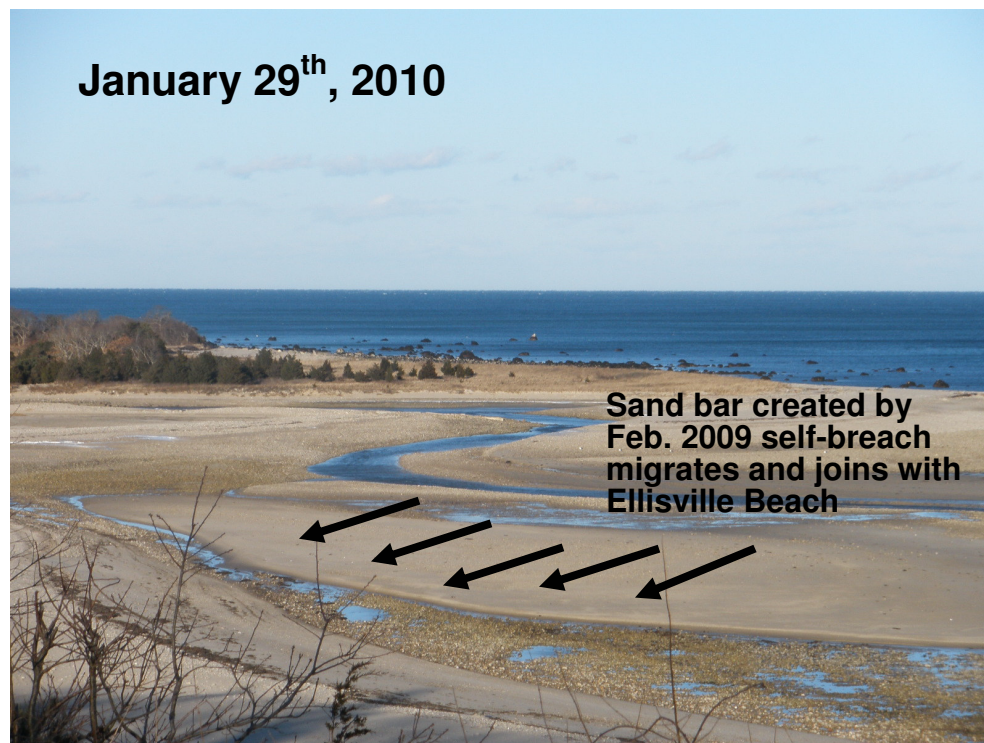
Please email us at Board@EllisvilleMarsh.org . We welcome your ideas and inputs.

Mother Nature Comes Calling: Winter Storms Reconfigure Ellisville Beach

A string of powerful winter storms this winter have reshaped Ellisville Beach and realigned the tidal inlet channel. The photos below tell the story.

In early 2009, a major storm punched a hole through the barrier spit that extends southward from the state park jetty, creating a large sandbar.

Tidal flows out of the marsh followed both the old and new paths throughout the remaining months of 2009.

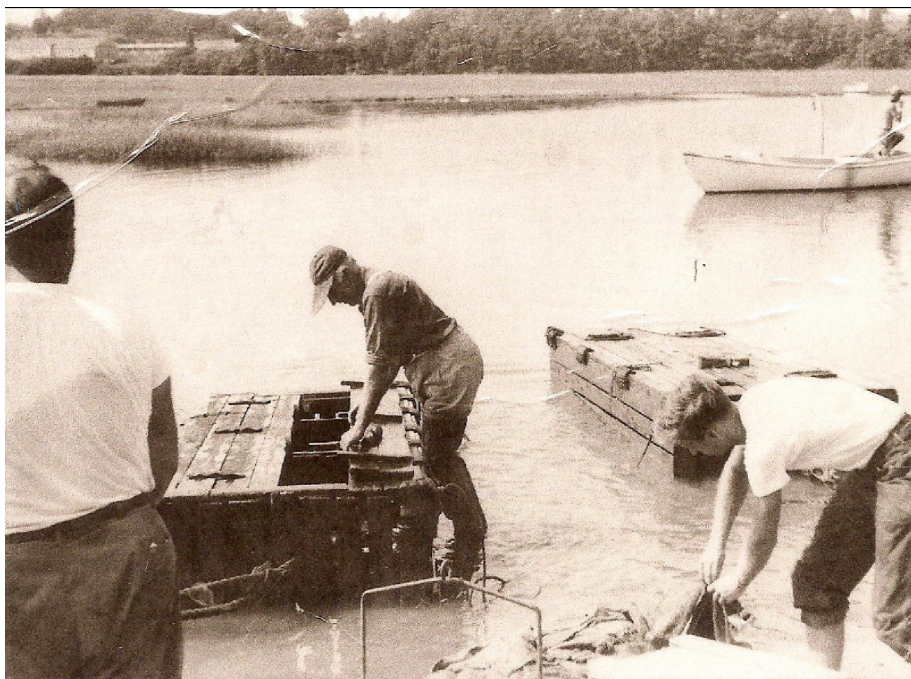


At least five major storms during the winter months, mostly nor'easters, pushed the sand bar southeastward until it joined with Ellisville Beach, closing off the old channel path.

While the inlet channel remains diverted, the degree of resistance to tidal flows out of the marsh has been somewhat reduced.

Ever Heard of a Lobster Carr?

The lobster carr was made of rough spruce timber. It measured about 12' x 4' x 18" and was divided into three compartments to separate different sized lobsters. These carrs would be moved about 300 yards from the beach and served as a holding pen for the daily catch. A dip net could be used at the carr to bail out the lobsters into boxes where they were covered with burlap and brought to shore to be trucked to market. Or if a buyer could be contacted a day ahead, the carr would be towed in about a half hour before high tide and unloaded into boxes and placed right onto the buyer's truck. The Snow Inn in Harwichport purchased a great many Ellisville lobsters. Thanks to Al Marsh for his description and for the 1940's photo of Al and his father. (Article contributed by Karyl Silva)



Percy Marsh and young son Albert unloading a lobster carr in Ellisville Harbor in the 1940s.

In Memoriam

Grace Pleadwell, one of the Friends' staunchest supporters and perhaps our oldest member at 97, passed away on January 15th. Grace was born in Philadelphia, PA, graduated from Quincy High School and Bridgewater Normal School, and was a substitute teacher in the Quincy Public Schools for many years. An avid traveler, she visited the UK, Europe, Malta, Hawaii, Australia, Alaska, Aruba and most recently China. However, her attachment to Ellisville Marsh was long standing and special. She had been coming to Ellisville since the mid-1930s at the time she met her late husband Walter. Walter's father had built a cottage abutting the marsh in 1922. She loved to walk the beach and marsh. In the fall, when the flowers were in full bloom, Grace and her daughter Susan would pick a few sprigs of beach heather. Put in a vase, they would last the winter as dried flowers. The Pleadwell family has a long history of living next to and enjoying the beauty and diversity of Ellisville Marsh and wish to help preserve it for future generations. The family generously decided to honor Grace's memory by directing donations in lieu of flowers to the Friends. When next we walk the beach and see the beach heather blossoming we will know that Grace is still among us in spirit.

